

Table 1 lists the most popular **x-Max**® housings normally held in stock. CCI Thermal can manufacture box lengths up to 48" (1220 mm).

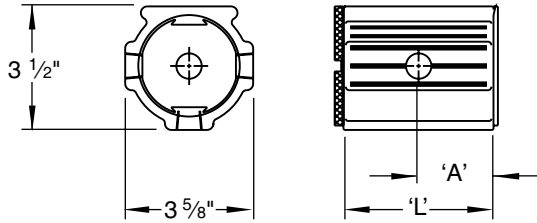


Figure 2 XH Series 1 enclosures

Optional mounting bracket is shown on page F7. For special orders, consult factory.

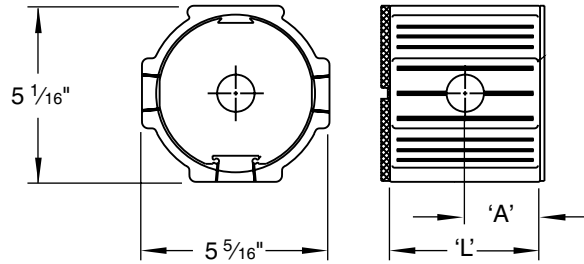


Figure 3 XH Series 2 enclosures

TABLE 1 Standard Type XH Terminal Enclosures

Box Length 'L'	Figure No.	Hole Sizes (NPT)	Hole Location 'A'		Internal Volume		Catalog Number	Weight	
			in	mm	in ³	cm ³		lbs	kg
2.50	2	1/2"	1.250	32	5.3	87	XH1B1	1.7	0.8
3.25	2	3/4"	1.625	41	9.5	155	XH1B2	2.0	0.9
4.00	2	3/4"	2.000	51	13.5	222	XH1B3	2.3	1.1
3.50	3	1"	1.750	44	27.8	455	XH2B1	3.0	1.4
4.25	3	1"	2.125	54	38.4	630	XH2B2	3.5	1.6
5.0	3	1"	2.500	64	49.1	805	XH2B3	4.0	1.8

Special Accessories

Special **x-Max**® accessories are available if required for a specific application. These items include:

- mounting bracket (see page F7)
- dry-seal plugs
- lengths of "Trolley" used for installing components
- housing to housing couplings (consult factory)
- sight glasses

Consult Table 2 and Table 3 for catalog numbers.

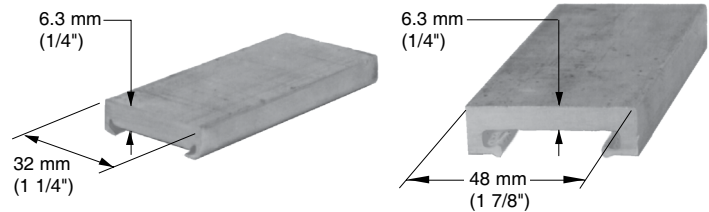
TABLE 2 x-Max® Trolley Sections

Description	Length		Catalog Number
	in	mm	
Small Trolley (for Ser. 1 or Ser. 2)	6	152	XHT1152
	12	305	XHT1305
	18	457	XHT1457
	24	610	XHT1610
	30	762	XHT1762
	36	914	XHT1914
Large Trolley (Ser. 2 only)	6	152	XHT2152
	12	305	XHT2305
	18	457	XHT2457
	24	610	XHT2610
	30	762	XHT2762
	36	914	XHT2914

To Order Specify

Quantity, catalog number and special accessories.

XH



Small Trolley

Large Trolley



Dry Seal Plugs

Sight Glass

TABLE 3 x-max® Dry-Seal Plugs

Thread Size	Catalog Number
3/8" NPT	XHP037
1/2" NPT	XHP050
3/4" NPT	XHP075
1" NPT	XHP100
1 1/4" NPT	XHP125
1 1/2" NPT	XHP150